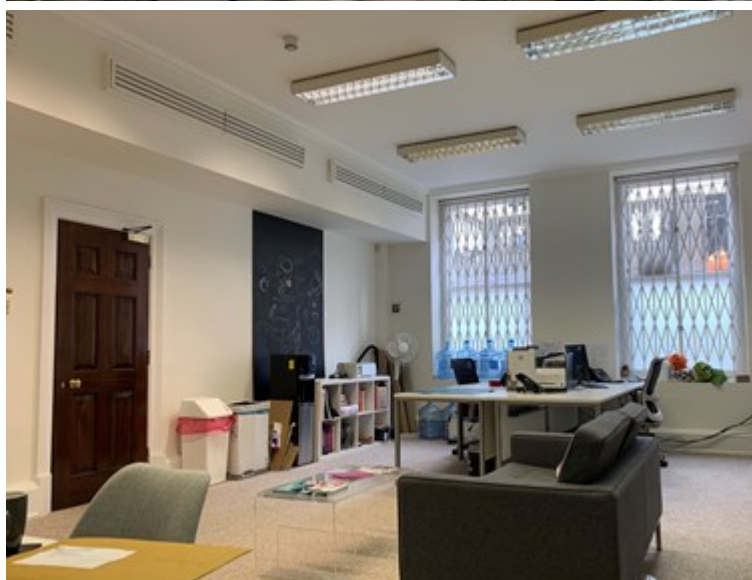


26 GROSVENOR GARDENS, LONDON SW1W 0DH

TUCKERMAN
CHARTERED SURVEYORS

OFFICE TO RENT | 547 SQ FT | £33 PER SQ FT.



VICTORIA'S EXPERT PROPERTY ADVISORS

TUCKERMAN.CO.UK



TUCKERMAN

1 CASTLE LANE, VICTORIA,
LONDON SW1E 6DR

T (0) 20 7222 5511

LOWER GROUND OFFICE SUITE TO LET



i DESCRIPTION

The available office accommodation is arranged on the lower ground floor and provides good quality bright space with exceptional floor to ceiling height.

Furniture can be provided by separate arrangement.

✓ AVAILABILITY

FLOOR	SIZE (SQ. FT)	AVAILABILITY
Lower Ground	547	Available
TOTAL	547	

★ AMENITIES

- Period Building
- Separate Meeting Room
- Good Floor To Ceiling Height
- Communal Kitchen & Shower Facilities
- Passenger Lift
- Comfort Cooling
- Central Heating

📄 TERMS

RENT	RATES	S/C
£33 per sq ft.	£10.73 per sq ft.	TBC
Available by way of a sublease until September 2020.		

EPC
The premises has an EPC rating within Band C.

☎ GET IN TOUCH

WILLIAM DICKSON	HARRIET DE FREITAS
Tuckerman 020 3328 5374 wdickson@tuckerman.co.uk	Tuckerman 020 3328 5380 hdefreitas@tuckerman.co.uk