

55 STRAND, LONDON WC2R 0LQ

TUCKERMAN
CHARTERED SURVEYORS

OFFICE TO RENT | **3,005 SQ FT** | £55 PSF



VICTORIA'S EXPERT PROPERTY ADVISORS

TUCKERMAN.CO.UK

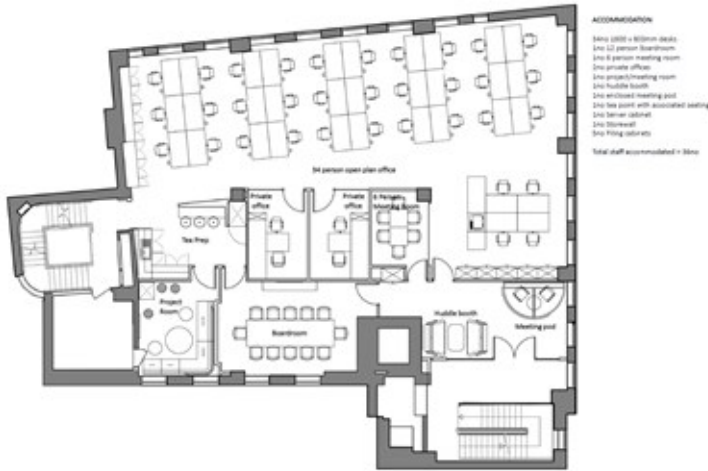


TUCKERMAN

1 CASTLE LANE, VICTORIA,
LONDON SW1E 6DR

T (0) 20 7222 5511

FIRST FLOOR OFFICES TO LET WITHIN PRESTIGIOUS BUILDING



i DESCRIPTION

55 Strand is a prestigious office building located in the heart of London's West End. Local amenities are endless with Covent Garden, Soho, Leicester Square, Westminster and Waterloo all on your door step. Notable local office occupiers include Spotify, Coutts and The Economist. Notable local restaurants include The Savoy Grill, Cora Pearl, Stick n Sushi, Flat Iron and Barrafina.

Local Transport includes, Charing Cross Overground and Underground, Embankment Underground, Covent Garden Underground and Leicester Square Underground. Waterloo Station is within a 15 minute walk from the building.

55 Strand has a contemporary reception with Commissionaire, passenger lifts, 24 Bike Racks and 7 showers. The first floor is fully fitted, to provide desking for 34 staff, a board room with a variety of other meeting rooms, a new fit out was recently completed.

✓ AVAILABILITY

FLOOR	SIZE (SQ FT)	AVAILABILITY
First	3,005	Available
TOTAL	3,005	

☎ GET IN TOUCH

HARRIET DE FREITAS	WILLIAM DICKSON
Tuckerman 020 3328 5380 hdfreitas@tuckerman.co.uk	Tuckerman 020 3328 5374 wdickson@tuckerman.co.uk

★ AMENITIES

- Fully Fitted
- Commissionaire
- Showers
- Bike Racks
- Contemporary Reception
- Fully Raised Floor
- Air Conditioning
- LED Lighting
- Good Natural Light
- Passenger Lift

📝 TERMS

RENT	RATES	S/C
£55 psf	£29.50 psf	£12.25 psf
Available on a Sublease to August 2021 or an assignment basis to August 2023.		

EPC
Available on request.

LINKS
Website Virtual Tour